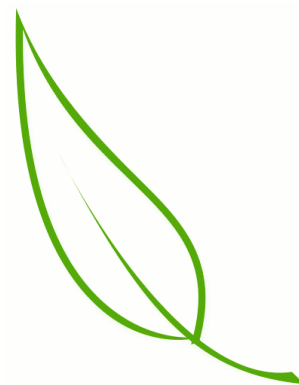




June Report

2018

Brad Alexander



Drone

- I've been flying a lot and I almost have all of the bugs worked out.
- Danica wants me to fly her bee fields to note bee production vs plant health for correlation. I plan to do this starting Thursday.

PGRs

- Second treatment is applied and the plots are mowed around. I will mow Art's again just prior to the summer tour.
- Gibberellic acid plots are now laid out and (1st application potentially before meeting)

Olds - Weevil Trial

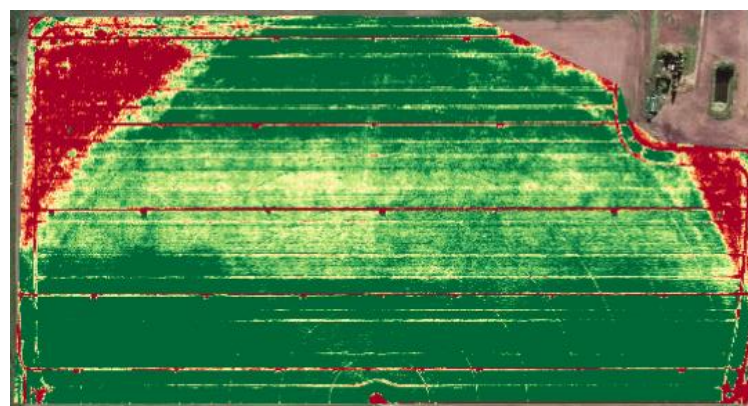
- Ben's field has weevils now, but the bees are out, Paul will treat the plots on the 16th or 17th after the bee's bedtime.
- The final samples are now collected at Travis's and the data is awaiting Ben's plot for statistics

AgriScienc Project

- Second samples have been taken at full flowering stage and things are going smoothly with coordinating field visits.

The Red Dragon

- The effects of last year's trial are rather clear from the drone. The area where we tested the Red Dragon is much less healthy than the rest of the field.
- Given that these plots were so much larger than the norm, I was wondering if we could offer the growers a little extra compensation? They originally received the standard \$1000 compensation that smaller scale trials receive.



Summer Tour - July 24th

- I've talked with the producers and created the map/schedule. Should we print any, or go digital only?
- Frontier Signworks can print poster size images. I have them ready to go except for elevation.